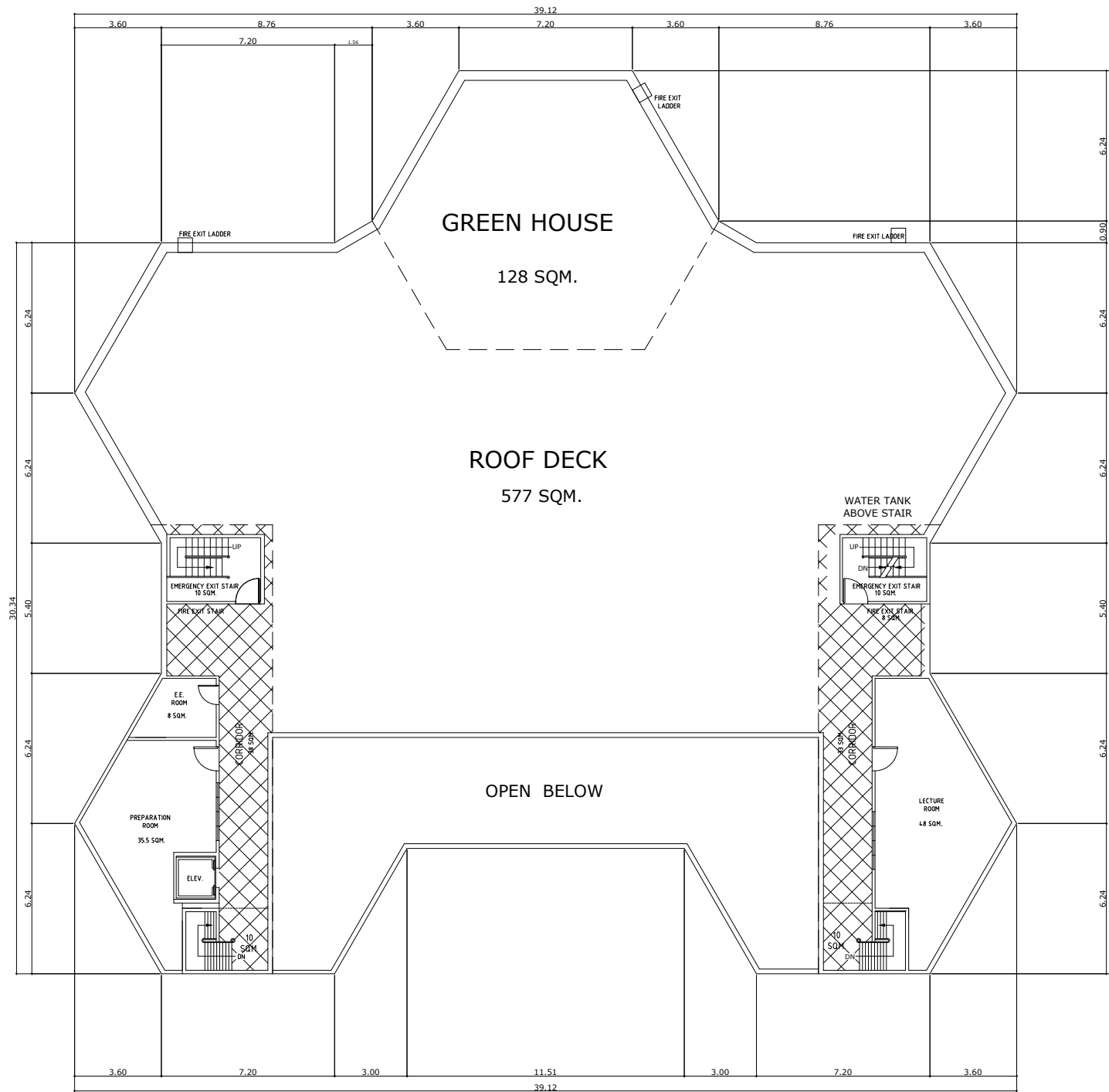



**NOTE:**

FINAL LAYOUT OF ROOMS INCLUDING FURNITURE'S , FIXTURE'S AND MECHANICAL PROVISIONS WILL BE FINALIZED DURING DESIGN STAGE.



**ROOF DECK**  
SCALE 1:300M

<p><b>ENGINEERED BY:</b></p>  <p>REPUBLIC OF THE PHILIPPINES DEPARTMENT OF SCIENCE AND TECHNOLOGY PHILIPPINE SCIENCE HIGH SCHOOL MIMAROPA REGION CAMPUS BRGY. RIZAL, ODIONGAN, ROMBLON</p>	<p><b>PROJECT TITLE:</b></p> <p>CONSTRUCTION OF LABORATORY BUILDING</p> <p><b>LOCATION:</b> BRGY. RIZAL, ODIONGAN, ROMBLON</p>	<p><b>PREPARED BY:</b></p> <p>JOLITO G. TAN RESIDENT ARCHITECT</p>	<p><b>APPROVED BY:</b></p> <p>EDWARD C. ALBARACIN CAMPUS DIRECTOR</p>	<p><b>SHEET CONTENTS</b></p> <p>AS SHOWN</p>	<p><b>SHEET NO.</b></p> <p>A</p> <p>5 6</p>
---	--	--	---	--	---